



BRIEF INFORMATION

Slim Surface Mount LED Awning Lamps

PRODUCT FEATURES

HELLA is proud to announce the release of its new slimline range of surface mounted LED awning lamps. With an ultra low profile of only 11 mm the new Slimline Surface Mount Awning Lamps can be mounted with a large degree of flexibility. They are ideal for mounting in space restricted, shallow and narrow channel applications. All slimline signal lamps are designed with an ultra wide visibility optic for improved side visibility.

True to HELLAs commitment to design true 'Fit and Forget' products, the new Slimline family features low power consumption and lenses made from Grilamid. This revolutionary transparent plastic offers an unbeatable combination of properties including toughness against impact, long term UV stability and resistance to commonly used chemicals and washes.



Reduced glare design to prevent eye strain.



Grilamid lens.



Low power consumption.



Ultra slim with a profile height of only 11 mm for surface mount.

PRODUCT FEATURES

Reverse polarity protection

If the polarity is accidentally reversed, the light does not suffer any damage.

Contacts

Pre-wired with 2.5 m of twin core cable.

Sealed to withstand high-pressure cleaning

Tested to IP 6K7 and IP 6K9K, this light is protected from dust and water ingress under constant immersion.

High vibration resistance

The lights have been tested to HELLA Norm 67101 and meet the requirements for OEM production buses, commercial vehicles and tractors over 6.5 t.

Designed for a Fit and Forget service life

The latest LED technology provides an optimum signal pattern with low power consumption.

LED LIGHTING TECHNOLOGY

As a leading innovator in the field of automotive original equipment, HELLA is setting benchmarks:

Extremely low energy consumption

With the combination of efficient light-emitting diodes (LEDs) and precision optics, HELLA lights achieve the statutory light distribution with over 90% less power consumption compared to bulb lamps! No change of light source, no maintenance and an extremely long operating life due to optimal thermal management. To extend the design life of the light, the components are arranged in a way that optimises the temperature conditions, preventing overheating of the LEDs at high ambient temperatures. Competent thermal management maximises design life. The design life of these LED lamps corresponds to that of the vehicle.



ULTRA SLIM DESIGN

Featuring a height of only 11mm.

APPLICATION EXAMPLES



TECHNICAL DETAILS

Technical data

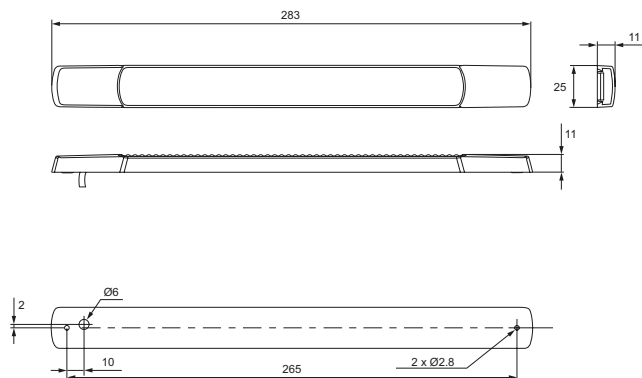
Operating voltage	12 V and 24 V DC
EMC approval	Ⓜ, ECE-10R
Mounting	horizontal or vertical
Number of LEDs	10
Power consumption	< 3W
Operating temperature	-40 °C to +60 °C
Protection class	IP 6K7, IP 6K9K
Contacts	2.5 m cable with open cable end
Installation	Screw connection with 2 screws \varnothing 5 mm
Specification	HELLA standard 67101 class 1.3, 2.3, 3.3, 4.2, 5.2, 6.2, 7.3, 10.3, 11.3
Design life	Design life of the vehicle*

* Dependent upon the operating temperature.

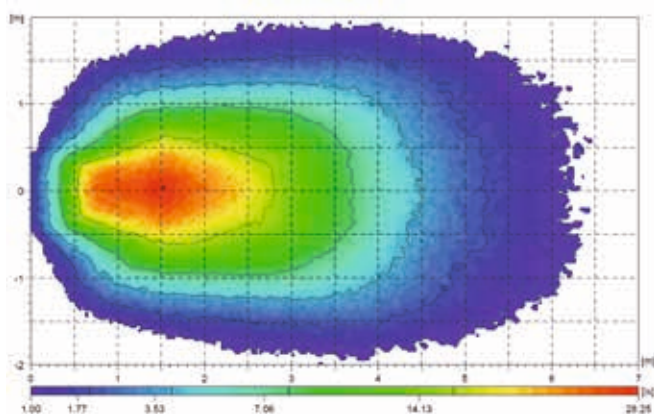
Note: The individual LED lights may only be operated with a 3 A fuse.
Operation of the light with AC voltage or synchronised DC voltage is not permitted.

Technical drawing and hole pattern

All dimensions in mm

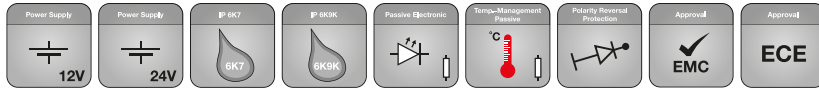


LIGHT DISTRIBUTION



LED Awning Lamp mounted 2.5 m high with a mounting bracket on a vertical surface

RANGE OVERVIEW



Product Image	Part number	Function	Voltage	Connection	Packing
	2JA 980 879-011	White awning lamp	12 V	2.5 m cable	1
	2JA 980 879-111	White awning lamp	24 V	2.5 m cable	1
	2JA 980 879-201	Warm white awning lamp	12 V	2.5 m cable	1
	2JA 980 879-301	Warm white awning lamp	24 V	2.5 m cable	1

SPARE PARTS / ACCESSORIES

Product Image	Part number	Function	Packing
	8HG 958 000-011	Mounting bracket 45° – white	1
	8HG 958 000-021	Mounting bracket 45° – charcoal	1
	9HD 980 885-008	White screw caps	Bulk (4 pcs)
	9HD 980 885-018	Charcoal screw caps	Bulk (4 pcs)