







## Preliminary Steps

1. Read all instructions carefully and study diagrams before installing lights.
2. Check with state and local authorities for laws governing usage and proper mounting of auxiliary lamps.
3. Disconnect ground connection from battery (marked "-") to avoid accidental short circuits before attempting to connect electrical wires.
4. Route new wires along existing wiring . Tape as necessary to correct slack.
5. When running wires through the firewall, keep them away from moving parts.

## Mounting Lights

1. Drill 8.5mm holes for screw placement on the surface where you would like to x the light.
2. Use the bolt to fasten the lamp, add the locking washer and tighten the bolt.
3. Illustration of Multi Mounting Options : Side Bracket & Bottom Bracket.
4. Wiring:

1. BLACK....  GROUND
2. RED.....  MIAN BEAM (DRIVING LIGHT)
3. WHITE....  WHITE POSITION LIGHT
4. YELLOW...  ORANGE POSITION LIGHT
5. GREY.....  WARNING LIGHT
6. BLUE.....  SYNCHRONOUS / MODE SWITCH

## Warnings

1. Use as intended
2. Use in airy places
3. Do not touch the lamp during operation, immediately after it is turned off, the lamp may get warm
4. Any unauthorized interference with the lamp (associated with its depressurization, interference with the electronic system, etc.) is associated with the loss of warranty
5. The device must be installed and kept out of reach of children

Lumen	ECE 1300 Lm (Raw), 1240 Lm (Effective)
	OFFROAD: 9000 Lm (Raw), 6000 Lm (Effective)
Lux	350m (1 lux) ECE
	460m (1 lux) OFFROAD
Power	83W
AMP 12/24V	ECE: 1,04A (12V); 0,69A (24V)
	OFFROAD: 7,08A (12V); 3,24A (24V)
Position Lights	White and Orange
Warning Light	Orange
Voltage	9-32V
Colour Temperature	6000K
Certificates	ECE R148/R149/CE

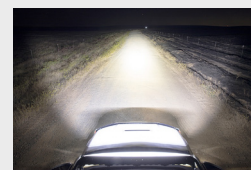
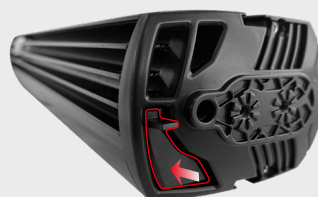
## 2 MODES OF OUTPUT

Magnetic switch to control different output off-road mode & E-mark mode

Magnetic switch



- 1 When magnetic cap is on, high output is well suited for off-road use



- 2 When magnetic cap is removed, beam output is approved with E-mark regulation.

